

# CALL FOR CALL FOR RESEARCH RESEARCH PAPERS PAPERS

PUBLICATION MONTH  
April and October 30th

PUBLICATION FEE  
33,000 JPY(Tax included)

SITE PAGE  
<https://www.ashs-human.net/ajhs/>

SUBMIT  
ajhs.hensyu@gmail.com

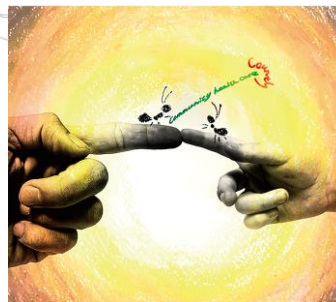


Asian Journal of

# HUMAN SERVICES

Online ISSN : 2188-059X  
Print ISSN : 2186-3350

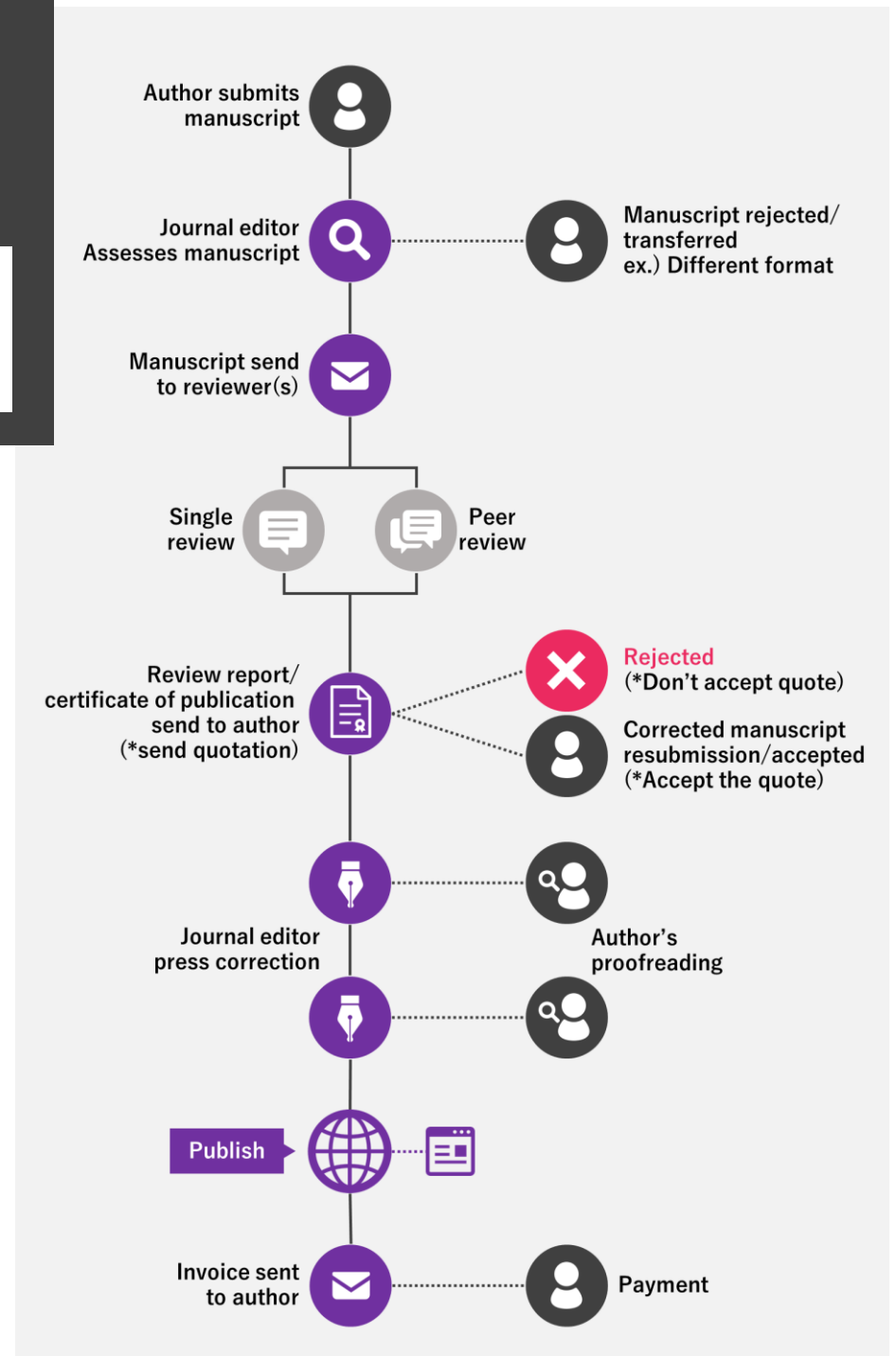
SINCE 2011



Build bridges by WA(2021)

The word 'Human Services' is used when someone faces social challenges for 'help' or 'support' people. 'Human Services' is expanding rapidly its area such as field of social welfare, medical, nursing, clinical psychology related mental care, health promotion for aging society, assist family for infant and child care, special supporting education corresponding to vocational education, education support sector corresponding to era of lifelong learning and fluidization of employment corresponding to the area of career development.

Human Services area, if its research methods are scientific, is internationally accepted and greater development is expected by collaborative research which is performed by multinational and multi-profession. This journal aims to contribute to the progress and development of Asian Human Services.



E-mail | [ashs201091@gmail.com](mailto:ashs201091@gmail.com)

Official-site | <http://www.ashs-human.net/>

©2022 Asian Society of Human Services

Asian Society of

# HUMAN SERVICES